



Woodland Way, Epping, CM16

BUTLER & STAG



An attractive, semi-detached house located in one of Theydon Bois most sought after turnings within easy reach of the village amenities.



Freehold

- Semi-Detached Family Home
- Integral Garage/Two Bathrooms
- Master With En-Suite
- Two/Three Bedrooms/Two Receptions
- South/ East Facing Garden
- Chain Free

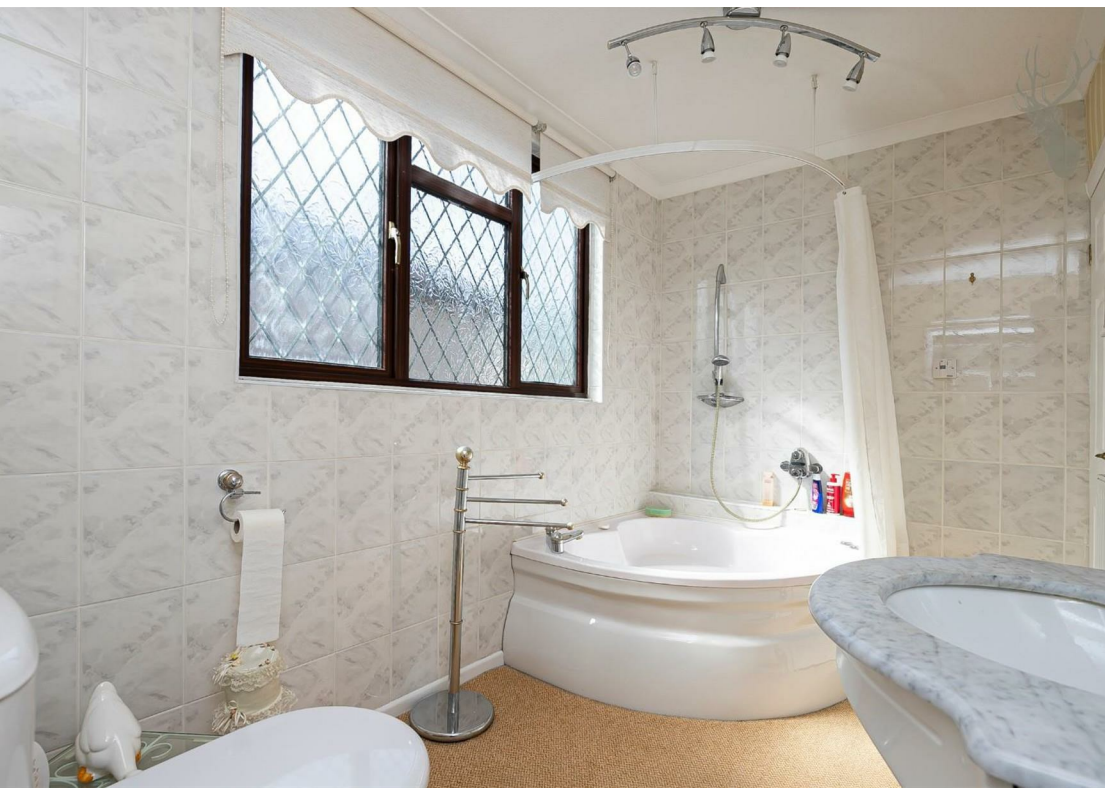
Spanning close to 1700 sq ft this two bedroom semi-detached house has the benefit of a lovely, mature and well stocked 105' south easterly facing garden, an integral garage and off street parking.

The ground floor comprises two large receptions, conservatory, a separate kitchen which has access to the lovely rear garden. On the first floor you will find two bedrooms both with en-suites, a walk in wardrobe/dressing room

Externally, a brick pave driveway provides off road parking space leading to the integral garage with a side access taking you to the beautiful rear garden which is a special feature of the property and is very well stocked with a variety of trees and shrubs, with a central lawn and an excellent size patio, small pond, and a shed at the far end of the garden.

Theydon Bois is a charming village with a traditional green and duck pond, well regarded primary school, a range of shops, pubs and restaurants, cricket, tennis and golf clubs. Transport links to London are excellent with the Central Line Tube Station just over ten minutes walk away and easy access to the M25 and M11.

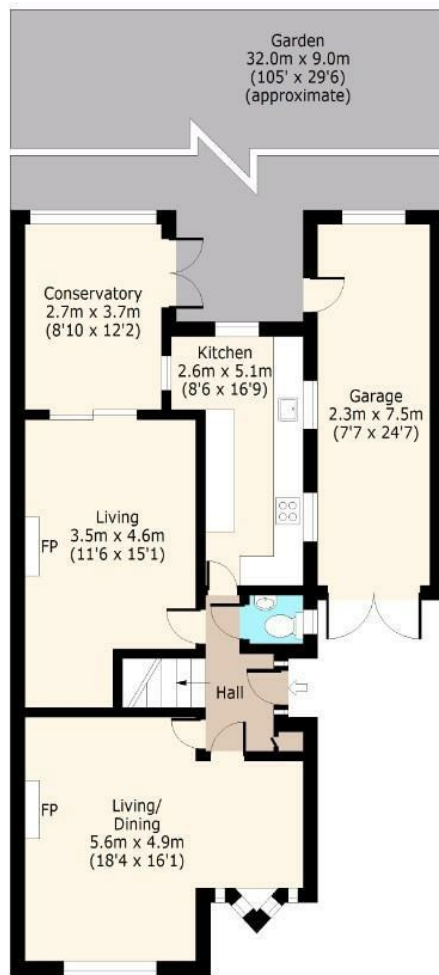




Woodland Way

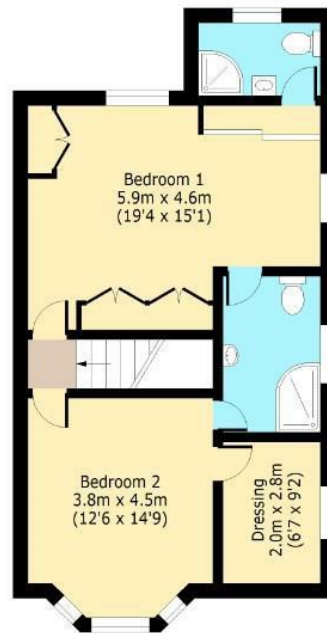
Ground Floor

Approx. 94 Sq. meters (1012 Sq. feet)



First Floor

Approx. 65 Sq. meters (700 Sq. feet)



Total area: approx. 159 Sq. meters (1712 Sq. feet)
For illustration purposes only - not to scale
www.lpaplus.com

BUTLER & STAG

☎ 01992 667666

🏠 4 Forest Drive, Theydon Bois, Essex, CM16 7EY

✉ theydon@butlerandstag.com

www.butlerandstag.uk

IMPORTANT NOTICE - These particulars have been prepared in good faith and they are not intended to constitute part of an offer or contract. We have not performed a structural survey on this property and the services, appliances and specific fittings have not been tested. All photographs, measurements, floor plans and distances referred to are given as a guide and should not be relied upon.